



ASIA 2019-20
TABLE PRODUCTS CATALOGUE

CONTENTS

Welcome

03

04

About Scientific Games

UTILITY SOLUTIONS

ShuffleStar

07

08

i-Score Plus

i-Score Roulette

09

10

i-Deal Plus

SafeBacc

12

13

Safe Shoe

Deck Mate 2

15

16

one2six

one2six Plus

17

18

MD3

Chip Star

19

20

Deck Checker

Chip Master-S

21

PROPRIETARY TABLE GAMES

Paris Poker

23

24

Fu Dao Le

Vegas Blackjack Fever

25

26

99 Fortunes

Back 2 Back

27

28

Spinner Winner

Zombie Blackjack

29

30

Zappit Blackjack

EZ Baccarat

31

32

Ultimate Texas Hold 'Em

Crazy 4 Poker

33

34

Free Bet Blackjack

Face Up Pai
Gow Poker

36

37

Blazing 7's

SIDE BETS

6 Card Bonus

38

38

Trilux

King's Bounty
Blackjack

39

39

Dragon Bonus



OUR SOLUTIONS

This catalogue is an overview of our table games products. SG Gaming is a leading global gaming supplier that is committed to making gaming more fun for players and more profitable for operators through product innovation and superior quality and service.

For more information on any of these products, please contact your local sales representative.



PROGRESSIVE
BLACKJACK
\$893,851.37
MIN: \$100 MAX: \$100
MAX: \$500

BLACKJACK TO 2
INSURANCE
DEALER MUST HIT SOFT 17
PAYS 3 TO 2
PAYS 2 TO 1

Vegas
50

MASTER

WELCOME.

Greetings and Welcome Everyone.

Scientific Games offers the widest range and comprehensive products such as Lottery, Digital products and all the land based casino products such as Slots, Utilities, Proprietary Table Games, Electronic Table Games and our Casino Management Systems and Modules to make your gaming operation a major success.

Here at *SG Gaming* we consistently look to improve and innovate so that our customers have access to products that will help grow, develop and improve their gaming businesses. Our unwavering dedication to delivering customers the best gaming technology is why we bring our best to G2E Asia. Demonstrating how we fulfill our mission to empower our customers by offering the best gaming and lottery experiences is what we are all about.

The lineup of product for this year's G2E Asia will demonstrate *SG Gaming* has the most exciting and extensive product lines. From our innovative slot machines customers will see the latest in gaming cabinets, linked progressives, standalone games, standalone progressives and roulette games. The highly anticipated *Dualos™X* for slots and *Quartz Hybrid* cabinet for Electronic Table Systems both utilise the Company's new *ArgOS* platform that was developed to benefit customers in the provision of game content efficiencies.

Additionally, our new *Chipmaster-S* that features chips to table delivery technology will be one of our key utility product highlights. In Casino Management Systems the Bet by Bet with *Shufflink* connectivity and *SG Vision* will prove to be an exciting development for operators. This will also be *SG Digital's* second year at the show featuring the Company's leading sports betting technology, *OpenBet™*, managed trading services with real-time data and pricing resources, and its Sportsbook Operations Services.

Our committed staff of professionals are always ready to demonstrate and explain the features of our products to show you why *Scientific Games* is the leading gaming supplier. Always aiming to deliver the world's best gaming experiences to your gaming floor with your customers in mind, *Scientific Games* values its partners and looks forward to many strong years ahead.

Your continued support and friendship is appreciated and respected.



Ken Jolly
Vice President & Managing Director - Asia



SETTING NEW STANDARDS FOR GAMING TECHNOLOGY AND ENTERTAINMENT

Scientific Games Corporation (NASDAQ: SGMS) is a world leader in gaming entertainment offering the industry's broadest and most integrated portfolio of game content, advanced systems, cutting-edge platforms and professional services.

The company is #1 in technology-based gaming systems, digital real-money gaming and sports betting platforms, casino table games and utility

products and lottery instant games, and a leading provider of games, systems and services for casino, lottery and social gaming.

Committed to responsible gaming, *Scientific Games* delivers what customers and players value most: trusted security, engaging entertainment content, operating efficiencies and innovative technology.

OUR MISSION

“ To empower our customers by creating the world’s best gaming and lottery experiences ”



THE BROADEST PORTFOLIO OF GAMES, SYSTEMS AND TABLE PRODUCTS

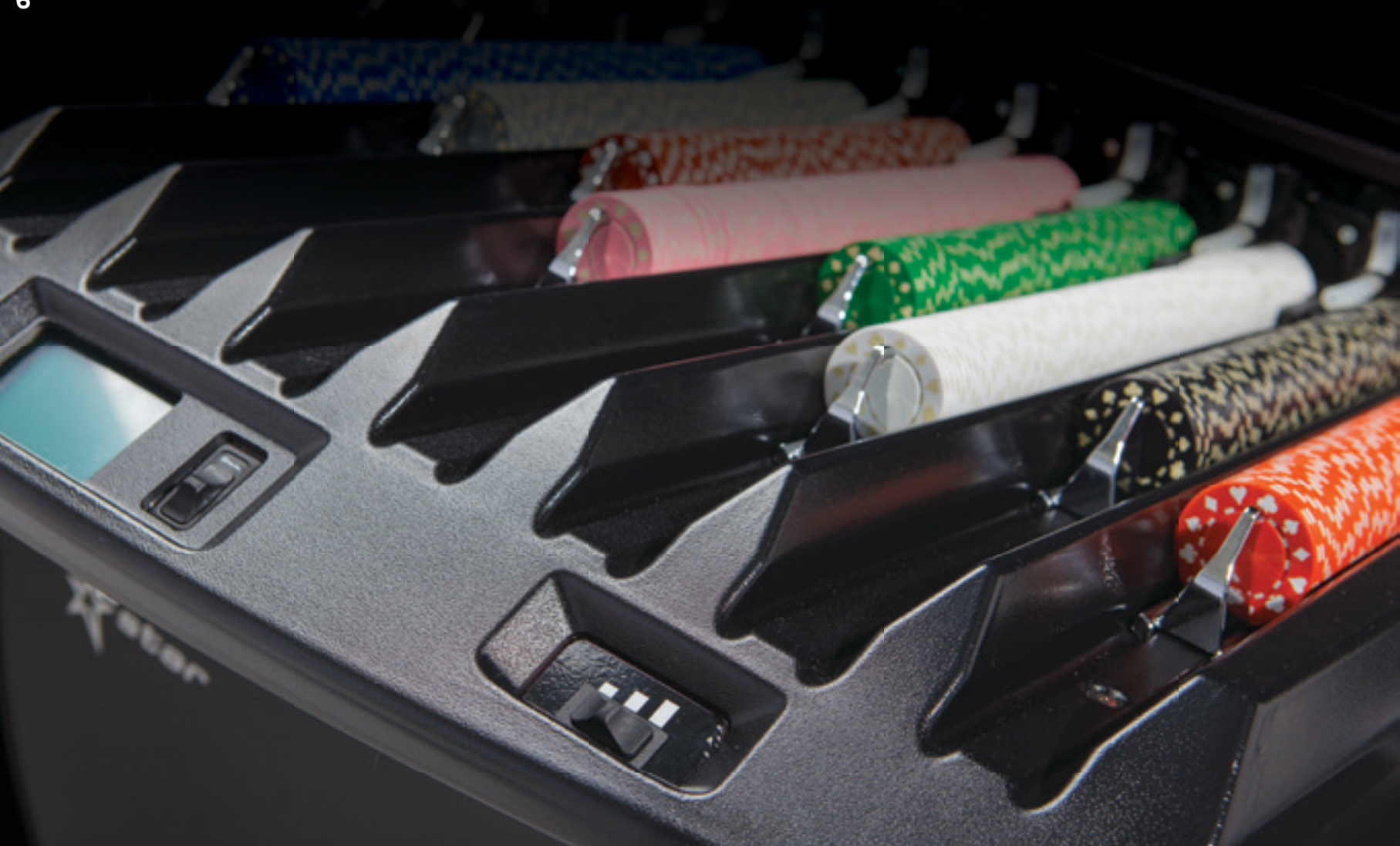
Scientific Games is dedicated to being the industry's only COMPLETE global solutions provider with products that will enhance the entire gaming operation, both on the casino floor and behind the scenes.

Our products continue to grow from proven, successful brands including *Bally*, *Barcrest*®, *Shuffle Master* and *WMS*. *Scientific Games*' compelling content and proprietary solutions engage players and empower customers because of our use of cutting-edge technology, decades of extensive industry knowledge, and market research and insights that provide a deep understanding of player and casino demand and preference.

- Electronic gaming machines for commercial and tribal casino, video lottery, central determination, licensed betting office, arcade and bingo markets.
- An extensive library of proprietary and licensed brand game content, that includes some of the hottest entertainment brands, designed to maximize player enjoyment and operator's return on investment
- A cutting-edge family of gaming platforms featuring the latest technology, engineered with both the player and operation in mind, that take player attraction and engagement to new levels
- Engaging, proprietary table games, table game progressives, card shufflers and chip sorters
- Innovative electronic table games, including fully electronic, multi-terminal and multi-game configurations linked to virtual, hybrid and live games
- The most robust suite of casino system products and solutions that allow operators to manage all aspects of their business while maximizing operating efficiency, player engagement and ultimately, revenue

UTILITY SOLUTIONS

As the industry's leading table game technology provider, Scientific Games is well known for developing products that improve table performance, and every Utility Product we sell is the result of years of technological innovation and a commitment to excellence.





The New Star of Multi-Deck Continuous Shufflers!



The ShuffleStar Continuous Shuffler will revolutionize the way cards are delivered to players. With capacity for four to eight decks, ShuffleStar provides casino operators with ultimate deck integrity and uninterrupted play, without downtime for loading a shoe or shuffling cards. The sleek, flush mount, low profile of this revolutionary flat dealing shoe improves lines of sight and effortlessly delivers up to three cards per second. Featuring onboard card recognition with two cameras and real-time card inventory, and misfeed detection to prevent loading jams, this ergonomic shuffler is sure to improve casino operations and game play.

FEATURES

- Front-loading 4-8 deck continuous shuffler
- Flush mount, low profile design for improved ergonomics and lines of sight
- Delivers up to three cards per second
- Onboard card recognition with two cameras for real-time card inventory
- Anti-jam misfeed detection

SPECIFICATIONS

Power Requirements:

- 100-240 VAC
- 1.8 A/0.8 A; 50/60 HZ

Dimensions:

- 23.03" x 8.03" x 16.02"

Weight:

- 37 lbs., 1 oz./16.8 kg



Display Baccarat game results and trends in real time!



Featuring a larger display and multiple new options and upgrades, the all-new i-Score Plus baccarat viewer now makes it even easier to attract players and display current game results and trends in real time. Plus, we've designed the i-Score Plus to work seamlessly with the Safe Shoe intelligent shoe and our baccarat product Safe-Bacc to provide instantaneous screen updates without requiring manual data input by the dealer.

FEATURES

- 24-inch, double-sided, horizontal or vertical LCD display
- Advanced motion graphics and animations
- Redesigned reader board layout
- Optional Dragon Bonus, Fortune 7 and Super 6 side bets
- EZ Baccarat side bets now available
- Dragon/Tiger now available

WORKS GREAT WITH:





The Most In-depth & Interactive Roulette Scoring System Now Even Better Than Ever!

This attractive and brilliant sign captures all the exciting aspects of roulette. Current trends and recent behavior on the roulette wheel entices more players to the wheel. This comprehensive package supports single-zero and double-zero roulette, and features the Back2Back side bet, with PiP and Mini display options available (bonus feature requires the RNG Service and Door Lock Monitor to operate).

The roulette reader board application is designed to support several different protocols, in addition to the keypad input. A variety of customizable display options are available, including ten different currencies, six background colors, and a custom user-defined background color.



FEATURES

- Title Bar displays table name, casino logo, and table Min and Max bet
- Wheel Tracker displays the frequency of hits per each number in the configured number of spins
- Hot Tracker: Displays the four numbers that have hit the most times in the configured number of spins
- Cold Tracker: Displays the four number with the most spins since the last hit
- Statistics Bar displays the percentage of Red/Black, Odd/Even, and High/Low hit for the configured number of spins (20, 50, 100, 300)

WORKS GREAT WITH:



iDEAL plus

Initially released in 2007, the i-Deal single deck shuffler revolutionized specialty games such as Three Card Poker with its unprecedented level of security and features such as; card recognition technology, fast and efficient operation, and a sleek, low-profile design. Equipped with all-new and upgraded features, enhanced security, and improved card handling, the i-Deal Plus offers all of these same great features PLUS... much, much more!



FEATURES

- Front-mounted display
- On-board printer providing verification print out
- Security-card feature and redesigned output tray

WORKS GREAT WITH:





PROGRESSIVE
THE PACIFIC BLACKJACK

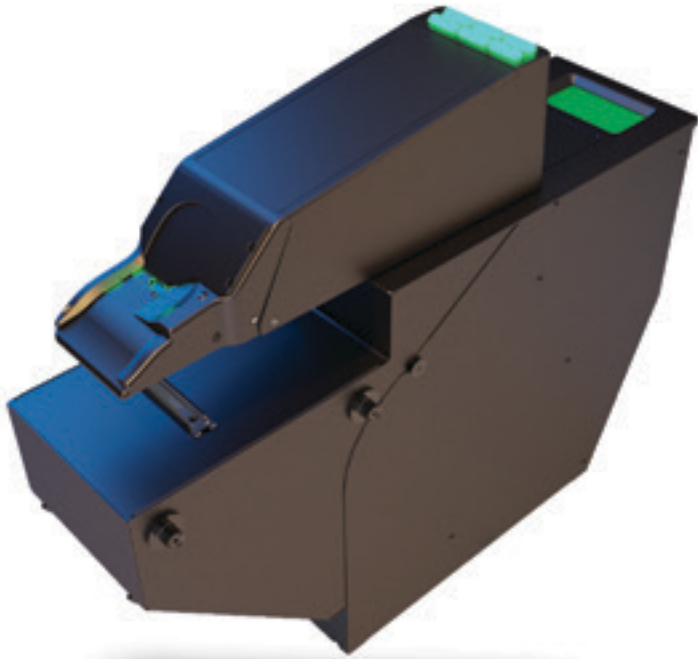
MAX BET	MAX WIN
MIN BET	MAX PAYOUT
MIN JACKPOT	MAX JACKPOT

\$893,851.37

POP'D \$0 MAX \$500

SAFE-BACC

安捷洗牌机



The revolutionary baccarat security system has arrived! The Safe-Bacc not only increases game speed, it provides the ultimate level of security right at the table. The Safe-Bacc provides a random, untrackable game that is free of collusion and manipulation. Once the cards are loaded into the shuffler, it guarantees you the security you demand!

- No need for pre-shuffled cards, freedom to choose any card type
- Links directly to the baccarat trends display
- Integrated “docking” intelligent, fast-dealing shoe
- Automatic loading from shuffler to shoe
- Remote dealer touchscreen display

WORKS GREAT WITH:



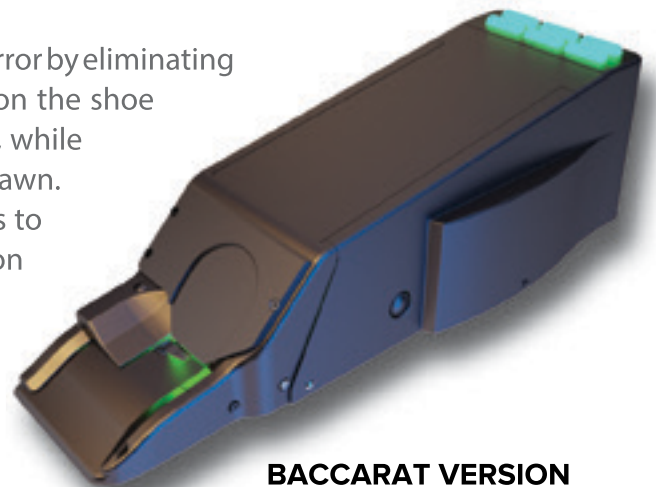
SAFE-SHOE

安捷洗牌机

Eliminate Dealer Error and Card Tampering with the Latest Intelligent Shoe

Safe Shoe, the latest version of our intelligent shoe, prevents dealer error by eliminating the possibility to overdraw or under draw cards. A stop engages on the shoe once the last card of the round is pulled to eliminate overdrawing, while audible and visible alarms are triggered when cards are underdrawn. In addition, Safe Shoe now offers a locking cover to prevent access to the cards inside, which combines with our proven card-recognition technology to further game security by eliminating card swapping, dealer/player collusion, and game manipulation.

Safe Shoe is offered for both Blackjack and Baccarat, and available with optional front-end hardware for dealing Squeeze or Face-Up Baccarat games. Safe Shoe also integrates with iScore Plus and Fusion Hybrid products.



BACCARAT VERSION

FEATURES

- Eliminates overdrawing and under drawing cards
- Built-in card recognition to work with all common cards in the market
- Compact size requiring minimal table space
- Integrates with iScore Plus and Fusion Hybrid products
- Available for both Black Jack and Baccarat
- 10 deck version available



BLACKJACK VERSION

WORKS GREAT WITH:





DECK MATE 2

Originally introduced in 2002, our DeckMate shuffler revolutionized poker and has been an industry standard for 10 years. Incredibly, we've further improved on one of the greatest shufflers ever built! The DeckMate 2 is twice as FAST, twice as SECURE and twice as RELIABLE.

FEATURES

- Shuffles in just 22 seconds
- Sorts cards back to a suited deck
- Counts and verifies rank and suit
- On-board card recognition system - alerts dealer to missing and extra cards

WORKS GREAT WITH:

TEXAS HOLD 'EM

FLUSH

ANDAR BAHAR

OMAHA



one2six

**A non-trackable,
continuous
Multi-Deck
Shuffler!**

The one2six multi-deck continuous shuffler combines user-friendly state-of-the-art technology to create a premium shuffler, perfect for use on your most popular multi-deck games. Its smart card delivery system ensures a smooth and continuous card supply that automatically verifies card quantity before, during, and after play. From Casino War, blackjack to face-up baccarat, the one2six can increase hands-per-hour by more than 20 percent, maximizing your table profits. Its security features virtually eliminate card counting and shuffle tracking, and ultimately help reduce losses due to cheating.

INCREASES REVENUE

- Eliminates game down time caused by hand shuffling
- Improves table win by dramatically increasing hands-per-hour - as much as 20 percent or more

ENHANCES GAME SECURITY

- Restricts card counting and shuffle tracking
- Identifies missing and extra cards

PROVIDES COST SAVINGS

- Reduces losses due to cheating, card counting, and shuffle tracking
- Reduces card wear and tear, making cards last longer
- Works with all card types and brands



WORKS GREAT WITH:



NGAU HAM

BAI BUU

one2six^{Plus}

This multi-deck continuous shuffler combines user-friendly interface and state-of-the-art technology to create a premium shuffler for use on multi-deck blackjack and baccarat titles. Its smart card delivery system ensures a smooth and continuous card supply, and the shuffler automatically verifies card quantity prior-to and during gameplay.

FEATURES

- Increases hands per hour by as much as 20 percent
- Restricts cheating, card counting, and shuffle tracking
- On-board card recognition system
- Alerts dealer to missing or extra cards
- Works with all card types and brands

WORKS GREAT WITH:

fusion

 **SCORE**
plus

FACE UP BACCARAT

SUPER 6





Leading the way in batch shuffling technology, the MD3 features card recognition which can read and verify every card being shuffled, bringing an unprecedented level of security to multi-deck tables like blackjack and baccarat. Its patented platform and gripper system counts and shuffles up to eight decks of cards quickly and quietly, and alerts the dealer of missing or added cards.

FEATURES

- Increases net win by permitting dealers to deal more rounds as opposed to shuffling multi-deck games by hand
- Alerts dealer to missing, extra or unknown cards – works with all card types
- Fast re-verification of the decks in case of a dispute or jackpot
- Optional on-board printer



chip star

Fitted within a traditional, yet elegant design, the Chip Star combines a custom user interface with state-of-the-art technology. It improves roulette performance without impact on chip durability, requires minimum service and features gentle chip handling. All moving parts for chip ejection are located right at the 10 sorting channels. It is equipped with an unequalled Chip-Pre-Separator, providing a full chipping rate even at high chip loads.

FEATURES

- Adjustable sorting speeds
- Can handle oversized chips of up to 43mm in diameter
- Chainless conveyor technology
- Outstanding chipping capacity



DECK CHECKER

Re-engineered and brought up-to-date with all-new components, including touchscreen controls and our proven card-recognition technology, the Deck Checker provides a fast, effective alternative for your card verification needs.

FEATURES

- Checks and verifies up to eight decks of cards in 1 min 45 seconds.
- Optical card recognition – alerts dealer to missing, extra and unknown cards
- Printed verification ticket
- Automatic adjustment for bridge and poker-sized cards
- Card vault for easy card storage and transport



CHIP MASTER S

The Ultimate Chip Sorting Solution!

Chipmaster-S™ is an exciting roulette product that will instantly improve game play and take chip sorting to a whole new level. Effectively and silently sorting up to 500 chips per minute, Chipmaster-S delivers stacks of 20 chips right to the table surface — no mess, no hassle. There is no longer a noisy device behind the roulette table where the dealer has to dive for sorted chips. Chipmaster-S delivers exactly what is needed, where it's needed.

This product is easily integrated into a standard roulette table and handles cash chips, wheel checks and French jetons. Chipmaster-S consists of 12 channels and an offsort box for unknown and non-negotiable chips, and holds standard chips 33-45mm in diameter. This distinguished and elegant chip sorting solution facilitates the dealer's full and uninterrupted attention to the customer, and provides an easy-to-use system to smoothly advance game play. In addition, Chipmaster-S promotes better security and surveillance with all chip handling being done above the table surface. Enhance the level of security, service quality and ergonomics on your roulette tables all at once.





PROPRIETARY TABLE GAMES

With table games continuing to grow in popularity, enhancing your game selection with proprietary table games is a great way to increase the profitability of your operation. To help you unlock your pit's earning potential, we're proud to offer you a variety of progressive side bets and bonusing options that are now available on many of our popular titles.

Paris Poker

Paris Poker™ features head to head play against the dealer and not other players at the game. Paris Poker also features the optional Banker's Buster and Player's Monster bonus wagers.

Paris Poker adds an unusual twist to standard stud poker by allowing you to pick one card from your five-card poker hand to be a Wild Card.

GETTING STARTED

- Make the required ante wager to get cards, you may also make the Banker's Buster and Player's Monster bonus wagers.

PLAYING THE GAME

- Once all wagers have been placed, the dealer will give each participating player and themselves their five-card poker hand. After looking at your hand you have a choice; fold and lose your ante, or place a play wager of 1x your ante. You'll determine which one of your five cards will be used as your wild card and place it face down in the marked Wild Card area. Your remaining four cards are to be placed face down under your play wager.
- Note: If you fold and have placed the Banker's Buster and/or Player's Monster wagers, those bets remain in action and are resolved as normal.

WINNING AND LOSING

- At this point the dealer will turn over their five-card poker hand and declare the Wild Card. The dealer needs a pair of aces or better to qualify. When the dealer doesn't qualify, all remaining ante wagers push and the Banker's Buster wagers are paid according to the posted payout. All remaining bets will be resolved in the normal way. If the dealer qualifies, all Banker's Buster wagers lose. If your hand beats the dealer's hand, the ante (if applicable) and play bets are paid 1 to 1. If the dealer's hand beats your hand, the ante (if applicable) and play bets lose.

PLAYER'S MONSTER

- The Player's Monster bet wins if your five-card poker hand contains one of the posted payouts. See payable for odds.

BANKER'S BUSTER

- The Banker's Buster bet wins if the dealer's five-card poker hand doesn't qualify with a pair of aces or better. See the layout for the posted payout.



Fu Dao Le is an optional progressive wager for Baccarat that wins if two or more of the first four cards dealt match your seat number.

GETTING STARTED

- You must make the standard baccarat wager to be eligible to play the progressive wager.

HOW TO WIN

- If at least two of the first four cards dealt match your seat number, you win. (Aces count for seat #1.) The more cards that match your seat number, the higher the payout. See payable for odds.

PROGRESSIVE JACKPOT

- The first four cards must be the same rank and the same color, and match your seat number.

DEALER ENVY

- The dealer automatically receives a payout when your seat number matches two or more cards from the original four cards dealt. See payable for payouts.

MATCHING CARDS

- Four (same colour)
- Four
- Three
- Two

PAYS

- Progressive Jackpot
- \$8,888
- \$777
- \$66

DEALER ENVY

- \$1,000
- \$250
- \$25
- \$5





Vegas Blackjack Fever™ is an exciting variation of Blackjack which includes several player friendly rule modifications. Vegas Blackjack Fever also offers the optional Precious Diamonds Bonus wager.

GETTING STARTED

- Make a bet to play against the dealer, you may also make a bet on the Precious Diamonds Bonus wager. Make your wagers and the dealer will give all participating players and themselves their starting cards. Once the starting cards have been delivered, standard Blackjack rules will be followed.

SPLITTING

- You may split equal-valued cards up to three times, making up to four hands, including Aces. (Split Aces are treated like other splits, allowing players to continue hitting).

DOUBLING DOWN & RE-DOUBLING

- You may double down on any hand - even after hitting and splitting, including on split Aces. You can re-double up to 3 doubles. When re doubling, you must double the total wager on the hand.

LATE SURRENDER

- You may surrender half of the bet on any hand of 2 or more cards, even after hitting, splitting, and doubling (when dealer does not have Blackjack).

INSTANT WINNERS

- Any non-doubled hand totaling 20 or less, with six cards is an instant winner.
- Any non-doubled hand totaling 21, with five or more cards is an instant winner.
- Player Blackjacks are instant winners, even against a dealer Blackjack. See payable for all Instant Winner payouts.

PUSH 22

- If the dealer busts with a point total of 22, all player hands result in a push. This only applies to hands still in action: all blackjacks will be paid before the dealer hits out their hand and busted hands remain as lost wagers.

PRECIOUS DIAMONDS BONUS

- The Precious Diamonds Bonus wager wins if you get a blackjack suited in diamonds. See payable for payout.



SAMPLE PAY TABLE - 99 FORTUNES

Hand	Prog. Pay	Pays to 1
Suited Quads (A's - 8's, ex 4's)	100%	
Suited Quads (other)		1000
Quads		100
Suited 9		19
Suited 8		18
Two Pair		15
Trips		10
House edge		12.11%

HOW TO PLAY

99 Fortunes ProgressiveSM game play is identical to standard baccarat, but it also features an optional progressive wager.

GETTING STARTED

Make a standard baccarat wager on player or banker. You may also make the 99 Fortunes Progressive wager.

WINNING AND LOSING

If two of the first four Player and Banker cards are a suited pair or higher you win. The top award will be paid to the player position matching the rank of the cards. Example: four suited 2's, position #2 (If playing the progressive) would win the top award. See payable for odds.





The Company's First-Ever Roulette Side Bet

This unique bonus bet offers players a chance to win up to 1,000 times their bet on a single spin of the wheel. A new variation on an old theme, if players think the previous winning number will repeat, Back 2 Back offers a chance to win 10x, 25x, 50x, 100x, 250x or 1,000x their bet!

FEATURES

- Amount won is determined randomly and displayed on the reader board
- Minimum bonus is 10x player bet and the maximum is 1,000x
- If the previous number hits again, the player wins!

HOW IT WORKS

Place your bet in the area marked "Back 2 Back." If the winning number hits again, you win!

ELIGIBILITY

Any player at the roulette table can place a Back 2 Back bet.

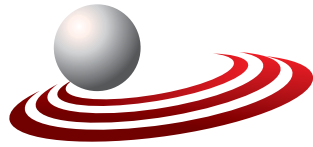
WINNING

If the number hits consecutively, players win 10x, 25x, 50x, 100x, 250x or 1,000x

AVAILABLE GAMES

- Roulette, Single Zero & Double Zero





SPINNER**WINNER**

Spinner Winner is an optional side bet for roulette. The player is making a wager that the next number will be the same as the prior number. The player may make this wager before any spin. If that spin's number is the same as the number that came up in the prior spin, the player will win.

HOW IT WORKS

- Players make the optional Spinner Winner side bet for any amount within table limits in the marked area.
- The bet wins if the previous number is rolled again.
- When this happens, the dealer will resolve all the traditional bets before initiating the Spinner Winner bonus round. Spinner Winner bets will remain on the felt until the payouts are determined.
- The dealer initiates the bonus round by placing two balls in the U-Spin. Either the dealer or a player - depending on house rules - will press the button to eject the balls onto the wheel. Where those balls end up determines the payouts. Please see the payable for odds.



U-Spin Roulette is a small, electro-mechanical device that gives players the chance to launch and control when the ball shoots into the roulette wheel. The dealer loads the ball(s) into the U-Spin Roulette and a player presses a button on a wireless remote to launch the ball(s) into the wheel; the device allows multiple balls to launch, either one or two at a time. U-Spin Roulette is perfectly designed for both the Spinner Winner and the Back2Back roulette side bet.



TRILUX BONUS SAMPLE PAYOUT

Hand	Pays
Mini Royal (A,K,Q, Suited)	100 to 1
Straight Flush	35 to 1
Three of a Kind	33 to 1
Straight	10 to 1
Flush	5 to 1

Zombie Blackjack is based on regular blackjack, but with a twist. Depending on the dealer's up-card, you may have the chance to bring a busted hand BACK TO LIFE.

GETTING STARTED

To begin, you must make your standard blackjack wager. Once all wagers have been placed, the dealer will give each participating player and themselves their first two cards. Once each player and the dealer have received their two starting cards, standard house rules for blackjack are followed.

PUSH 22

If the dealer busts with a point total of 22, any blackjack bets left in action are a push. NOTE: Player blackjacks are paid before the dealer hits out their hand, and are exempt from the Push 22 rule.

BACK TO LIFE

If you bust, and the dealer's up card is a seven through ace, your original blackjack hand can be brought BACK TO LIFE. The dealer will move your cards and original blackjack wager to the BACK TO LIFE card box. If the dealer busts with a point total of 23, 24, 25 or 26, the player is paid 1 to 1 on their wager. Any other final dealer total and the BACK TO LIFE money is collected. NOTE: Any wager made by the player, such as double down wagers or split hand wagers are eligible to win after a bust.

WORKS GREAT WITH:



Z

ZAPPIT

— B L A C K J A C K —

ZAPPIT Blackjack is based on regular blackjack. However, if players are dealt a hard two-card total of 15, 16, 17, or 18, they have the option to get two new cards. The dealer will check for a blackjack, if applicable, before players are allowed to ZAPPIT. Insurance is offered as in the regular game. If players elect to ZAPPIT then their initial hand is replaced with two new cards. Regular blackjack rules and procedures then continue with the new hand.



SIDE BETS:



WORKS GREAT WITH:





SAMPLE PAYOUT - EZ BACCARAT

Bet	Pays
Panda 8	25 to 1
Dragon 7	40 to 1
Tie	8 to 1

The Number One Baccarat Brand in the USA and Canada!

EZ Baccarat is played the same way as traditional baccarat. EZ Baccarat eliminates the 5% commission after every winning Bank hand without modifying any of the existing drawing rules of the standard game. Instead of taking a commission when the Bank wins with a total of 7 consisting of 3 cards – the Bank hand is a “push” or “stand-off.” The Player hand and Tie bets lose, as normal.



WORKS GREAT WITH:





SAMPLE PAYOUT - BASIC

Hand	Pays
Royal Flush	500 to 1
Straight Flush	50 to 1
Quads	10 to 1
Full House	3 to 1
Flush	3 to 2
Straight	1 to 1

Ultimate Texas Hold'em features head-to-head play against the dealer and an optional bonus bet that pays odds if the player's final five-card hand is a three-of-a-kind or better.

To play, players make equal bets in the ante and blind circles and may also make the trips bonus bet. Once players receive their two hole cards, they can either check or bet three to four times their ante. The dealer then reveals the three card flop. If players haven't already made a play bet, they can check or bet two times their ante. The dealer then reveals the turn and the river, and if players have not already bet, they can fold or bet one times their ante.

Next, the dealer reveals their two hole cards and announces their hand. If the player's hand beats the dealer, their play and ante bets win even money. If the dealer's hand beats the player, the player's wagers lose. If the player's hand ties the dealer's hand, their bets push. The blind bet pays if the player's winning hand is at least a straight, but if the player beats the dealer with less than a straight, it pushes. The dealer needs at least a pair to qualify. If the dealer doesn't qualify, they return each player's ante and all other bets receive action.

To maximize game play, we recommend using an i-Deal Plus single deck shuffler, or a DeckMate 2 shuffler.



CRAZY POKER



Crazy 4 Poker is an easy game to master. It offers play against the dealer, and the optional Queens Up and Bad Beat Bonus side bets.

HOW TO PLAY

You receive five cards to make your best four-card poker hand. A four-card is a straight, a four-card flush is a flush, etc.

PLAYER VS. DEALER

Make equal bets on the ante and Super Bonus spots to receive your five cards. After seeing your cards, you can fold or stay in the game by making the play wager. The play wager must match your ante unless you have a pair of aces or better. If you have at least a pair of aces, you may bet up to three times your ante. The dealer qualifies with a king-high or better. When you beat the dealer's qualifying hand, your ante and play bets win even money. When the dealer qualifies and beats your hand, your ante and play bets lose. When the dealer does not qualify your play bet wins and your ante bet pushes.

SUPER BONUS

The Super Bonus wins if you have a straight or better. Failure to get at least a straight does not result in an automatic loss. Your Super Bonus bet pushes if you tie or beat the dealer with less than a straight. If the dealer beats you and your hand doesn't contain a straight or better your ante, play and Super Bonus bets lose. However, If the dealer beats you and your hand does contain a straight or better your Super Bonus bet is paid and your original Super Bonus bet is NOT removed. See payable for odds.

QUEENS UP

The Queens Up bonus bet wins when you receive a pair of queens or better. See layout for odds. Note: Winning Queens Up wagers are paid regardless of the dealer's hand.

BAD BEAT BONUS

You have two ways to win if you are involved in a bad beat with the dealer. The first is by losing with a two pair or better and the second is by beating the dealer's hand of a two pair or better. Payouts are based on the qualifying hand that is beaten. See paytables for odds.



FREE BET BLACKJACK

Double Down and Split for Free!

Looking for an exciting spin on blackjack? Free Bet Blackjack lets players double down and split for free! If they choose the Free Bet option, the dealer places a special lammer next to their original wager. If they end up winning the hand, players get paid as if they had made a traditional split or double, even though they didn't put any additional money at risk. This game is also available with the Pot of Gold, Push 22, and Blazing 7's Blackjack Progressive side bets.



FREE DOUBLES

On any two-card
hard-total of 9, 10 or 11

FREE SPLITS

On all pairs except
10-value cards

HOW TO PLAY

Free Bet Blackjack plays almost identically to the standard game of 21. To start, players make a bet against the dealer and the additional Pot of Gold, Push 22, and Blazing 7's Blackjack Progressive side bets if they choose. Each player and the dealer will get two starting cards, as in standard blackjack. Next, depending on the player's cards, players have the following Free Bet options:

FREE SPLIT

Players can split any pair, except 10-value cards, for free. Free re-splitting is allowed.

FREE DOUBLE

Players can double their bets on any hard 2-card total of 9, 10, or 11 for free. Free doubling after splitting is allowed, when the above double rule is followed. If players choose to use the Free Bet, the dealer will place a special Free Bet lammer next to their cards.

PUSH 22

If the dealer busts with a point total of 22, any bets players have left in action push. The Push 22 side bet wins if the dealer busts with a point total of 22. If the dealer's final point total is any number other than 22, the Push 22 side bet loses. Player blackjacks are paid before the dealer hits out his or her hand, so they are exempt from the Push 22 rule.

POT OF GOLD

The more lammers players collect, the more they win. Payouts are based on the total number of Free Bet coins collected per blackjack hand. All Pot of Gold wagers lose to a dealer blackjack.

BLAZING 7'S BLACKJACK PROGRESSIVE

Players win if at least one of their first two cards is a seven. Players win more if both of their first two cards are sevens. The payout increases even more if their third card is also a seven. The progressive is based on the player's first three cards only.

WORKS GREAT WITH:





Face Up Pai Gow Poker features head-to-head play against the dealer and offers the optional Fortune Bonus and progressive wagers. As in standard Pai Gow, each player and dealer receive seven-cards, but in Face Up Pai Gow Poker the dealer's cards are dealt face-up.

Face Up Pai Gow Poker is a commission-free game. You do not pay 5% commission when you beat the dealer; however, when the dealer plays Ace-High, you automatically push.



GETTING STARTED

To begin each round, make a standard Pai Gow wager. You may also make the Fortune Bonus and progressive wagers.

FORTUNE BONUS

The Fortune Bonus bet wins if your best possible five-card hand is three-of-a-kind or better. If you wager at least \$5 on the Fortune Bonus, the dealer will place an "envy" button next to your bet. This qualifies you for an envy bonus payout. See payable for odds.

ENVY BONUS

The dealer will pay all envy bonuses at the end of the round. If at least one player receives a hand that qualifies for Envy Bonus payouts, all players with envy buttons win. You can win multiple Envy Bonuses in a round, but you CANNOT win an Envy Bonus for your own hand or the dealer's hand.

PROGRESSIVE

The progressive wager qualifies you for payouts from the progressive jackpot. See payable for odds.

Asia's first tables now in Manila!



Capitalizing on the fun and popularity of our Blazing 7's slot brand, Blazing 7's Blackjack Progressive and Blazing 7's Pontoon Progressive brings the excitement and big wins of the slot floor to your table games pit.

HOW TO PLAY

Blazing 7's is an exciting new optional progressive bet for Blackjack and Pontoon that wins based on how many sevens players receive in their hands. The more sevens in the hand, the more players win. To begin each round, players make a standard Blackjack/Pontoon bet and the Blazing 7's progressive bet. The dealer will then follow house procedures for Blackjack/Pontoon.

HOW TO WIN

You win if your first two cards are 7's. The payouts increase further if the dealer's up card is also a 7. See payable for odds.

Note: Progressive payouts are based on the player's first two cards and the dealer's up-card ONLY.

BLAZING 7'S PROGRESSIVE PONTOON (6 DECKS)

Hand	Pays	Prog. Pay
Three 7's - Diamonds		100%
Three 7's - Suited (Other)		10%
Three 7's - Same Color	250	
Three 7's	150	
First Two Cards - 7's	20	
Either of First Two Cards - 7	2	
House Edge		24.19%
Frequency		16% 1 in 6.3%

BLAZING 7'S PROGRESSIVE BLACKJACK (6 DECKS)

Hand	Pays	Prog. Pay
Three 7's - Diamonds		100%
Three 7's - Suited (Other)		10%
Three 7's - Same Color	500	
Three 7's	200	
First Two Cards - 7's	25	
Either of First Two Cards - 7	2	
House Edge		23.59%
Frequency		14.82% 1 in 6.7%

FEATURED SIDE BETS



HOW TO PLAY - 6 Card Bonus is an optional side bet of Three Card Poker. This Bonus Side bet is based on the best 5-card Poker hand that can be made from the six cards dealt to the Dealer and Player. Thus, each Player uses his own 3 cards and combines them with the Dealer's 3 cards.

HOW TO WIN - The Player is eligible to win this wager even if he folds his Ante wager. If the player has wagered the 6 Card Bonus side bet and folds his hand, the dealer will remove the original Three Card Poker wager and place the players cards under the 6 Card Bonus wager. All 6 Card Bonus wagers are resolved at the same time as the Three Card Poker wagers.



TriLux is an optional bonus bet for blackjack that considers the first two cards the player receives and the dealer's up card. If a player receives one of the winning three card hands, they will win.

To begin each round, players must make their standard blackjack wagers. They may also make the optional TriLux Bonus wager. The dealer then follows house procedures for blackjack.

Once players and the dealer have two cards, the dealer settles TriLux Bonus wagers in one of two ways. When the cards are dealt face up, the TriLux Bonus wagers will be settled immediately after everyone receives their first two cards and dealer's first card.

Winning TriLux Bonus bets will be paid and losing bets will be picked up in order of placement from the dealer's right to left. Then, standard blackjack play will resume. When the cards are dealt face down, the TriLux Bonus wagers will be settled on a hand to hand basis, as the dealer goes from left to right asking for hit/stand determinations.

FEATURED SIDE BETS



King's Bounty Blackjack is a blackjack side bet that pays when your first two cards total 20.

Envy payouts are paid to the dealer when the player gets one of the winning hands. See payable for odds.

Hand

2 Kings of Spades + Dealer BJ
 2 Kings of Spades
 2 Suited Kings
 2 Suited Queens, Jacks or 10s
 Suited 20
 2 Kings
 Unsuited 20

Pays

1,000 to 1
 100 to 1
 30 to 1
 20 to 1
 9 to 1
 6 to 1
 4 to 1



Commission Free Dragon Bonus is an exciting version of baccarat. The game play is identical to standard baccarat, with two exceptions:

- Banker bets push if the banker hand wins with a three-card total of 7.
- Winning banker bets are not charged commission.

Hand

Win by 9 points
 Win by 8 points
 Win by 6-7 points
 Win by 4-5 points
 Natural winner
 Natural ties

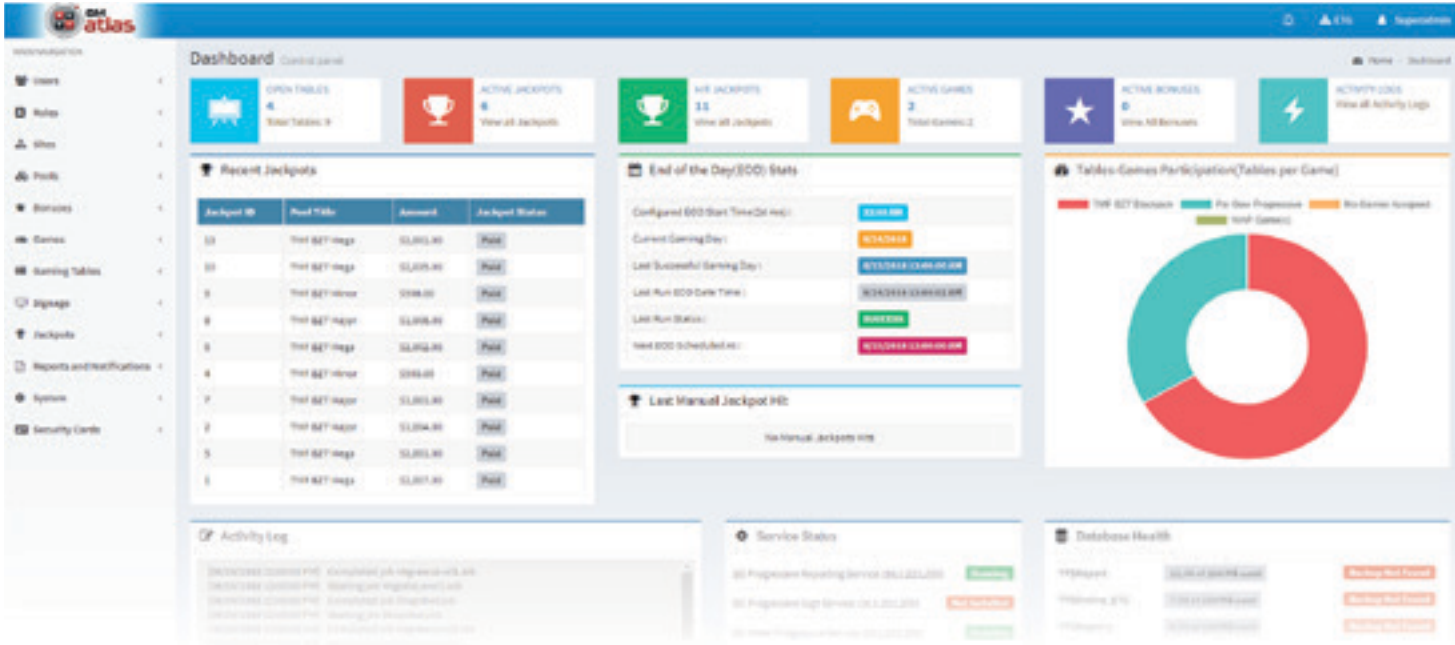
Pays

30 to 1
 10 to 1
 4 to 1
 2 to 1
 1 to 1
 PUSH

Fortune 7 pays 40 to 1



Take Your Progressive Operating System To The Next Level!



GM atlas™ is a progressive system platform designed to link multiple gaming tables through a casino network and run progressive games for players to contribute to and possibly win large jackpots. GM atlas is the natural evolution of Scientific Games previous generation of progressive system for table games “Nexus Command Game Manager”.

The system features a wide range of unique player’s experience enhancement options and casino operators must have:

- Progressive and Fixed jackpot wagering using casino chips or credits
- Multi-level multi progressive jackpots;
- Different game type jackpot interconnection when pay tables are similar;
- Mystery random progressive jackpots;
- Support for Wide Area Progressive and Operator Wide Area Progressive;
- Various wagering interface:
 - Single bet side betting using Chip Sensors
 - Multi bet side betting using credits with a Personal Bet Manager (“PBM”);
- Attractive LCD screens with customizable media content;
- Extensive accounting and report features, web-based administration;
- Flexibility in meter and reserve contribution based on meter value;
- Event based alert system notifications



infinilink

PROGRESSIVE SYSTEM



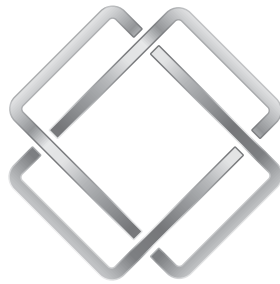
Infinilink is the exciting new way to link a progressive jackpot among many different table games. More games on the link means bigger, faster jackpots!

A game featuring an Infinilink progressive plays the same as it always has – make your progressive wager to qualify for normal and Infinilink payouts, and a portion of your progressive wager will go to the Infinilink meter. At random times, you'll become eligible for Infinilink payouts for that round of play – hit the associated hand, and you'll win both the regular and the Infinilink payout!

You're only eligible for an Infinilink payout when two conditions are met: you make a progressive wager for a round, and that round is randomly selected for an Infinilink payout. The hands and rounds selected for Infinilink payouts are completely random.

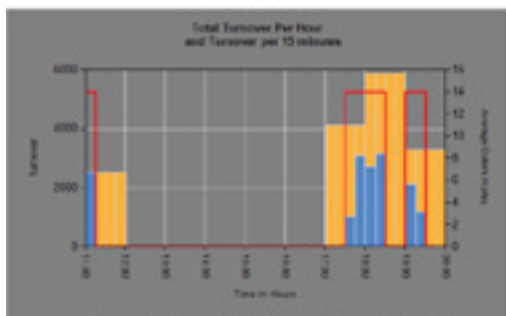
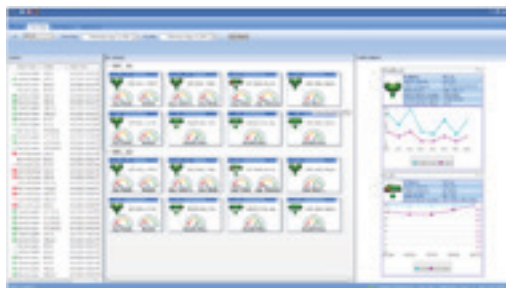
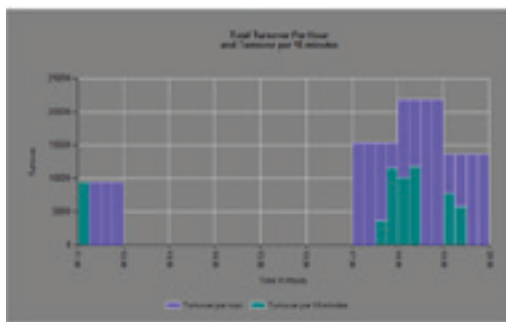
Once you become eligible for an Infinilink payout, you must still hit the associated hand in order to win it. Remember – the original pay table is still in effect, you just have the opportunity to win a lot more!

Manila (Philippines) is home to the largest Infinilink installation in the world and recently recorded the largest ever Infinilink jackpot prize at over USD\$1m.



SHUFFLINK™

The future of table performance analytics and management!



Shufflink creates a network and user interface to collect real time data from utility products, including shufflers, chippers, and related table peripherals for table performance analysis and player ratings. This advanced product provides new metrics and reports to significantly enhance operation's ability to quickly identify and forecast improvement opportunities and operating constraints.

Integration between *Shufflink* and Bally Systems (*Table View*) allows data to merge with system data for player tracking and rating, bonusing, and performance analysis (games, tables, dealers, floor zones). Data reports associated with *Shufflink* include rounds per hour and hands dealt on card tables; and rounds per hour, number of players and revenue/turnover on roulette tables. Data also includes effective start and end times for hands/spins, important device events (online, jammed, missing cards), and more to enable analysis of table/dealer productivity, table occupation and their correlation with table limits and opening.

BENEFITS:

- Collects data from shufflers, chip sorters, and other table devices
- Establishes a data base for automated performance analysis
- Provides reports on table productivity to improve table yield
- Provides a live floor view with table performance indicators





MACAU OFFICE

Unit B, 1/F,
CAM Office Tower
Avenida Wai Long
Taipa, Macau
Phone: +853 2872 2539
www.sggaming.com/asia